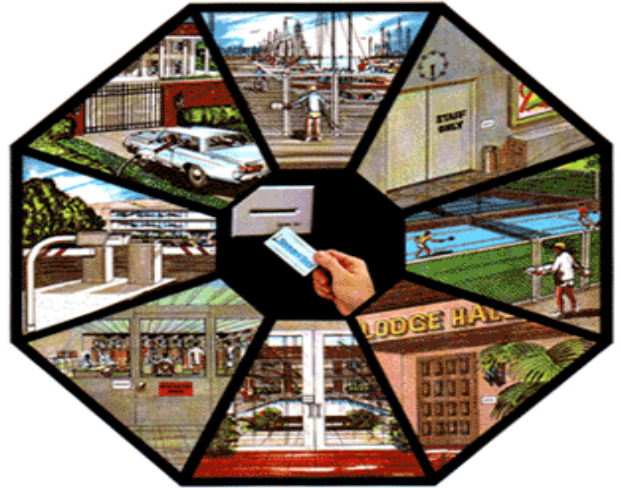


# Job Site - Facility Access Control

**FCB *id***, a member of the FC Background, LLC family, offers turn-key systems integration capabilities leveraging AIDC applications that provide asset tracking and management solutions enabling companies to tag, track and instantly locate assets, contents and component parts across the entire supply chain enterprise.

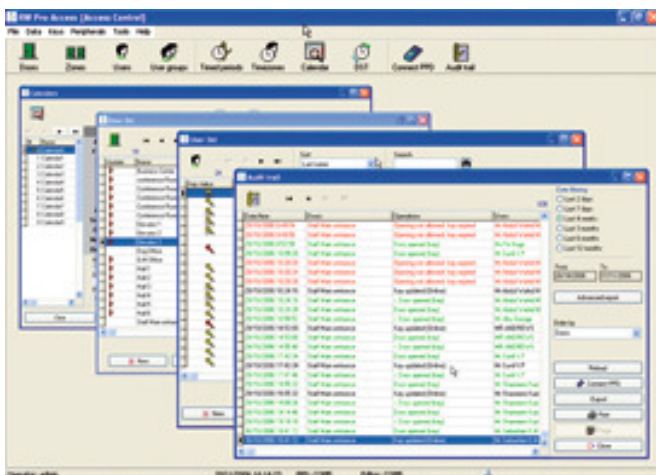
**Each and every construction site and/or secure facility requires security and control visibility to ensure safety and granting of approved access to specified individuals. Our systems are designed to not only give you a secure approach but also to provide value added capabilities.**



## Real-Time Job Site Access Control

Automating site access is critical to the construction community as well as campus facilities to allow attendees to enter and exit in a timely fashion. However, access also must incorporate validation to ensure the right individual is accessing the facility and or designated zone. Site access and control combined with RFID, 2D matrix or traditional barcode allows for the necessary visibility, insight and real-time agility to augment the security team logistics processes. Our Job Site Access and Control application combines the necessary hardware, software and services to provide a complete solution that solves each facilities unique tracking and control challenges. Potential benefits utilizing our application;

- Verified credentialing services
- Facility cingulated zonal access management
- Visibility across multiple zones and or portals
- Reduction of maintenance programs
- Automation of reporting functions



## Job Site Management

**FCB *id***'s applications provide granular level visibility that eliminate the normal delays, errors, and omissions of manual tracking systems. Our Job Site Access Control and Management application automatically monitors movement of access events at equipped portals and entry points as individuals with tagged badges move throughout the facility.



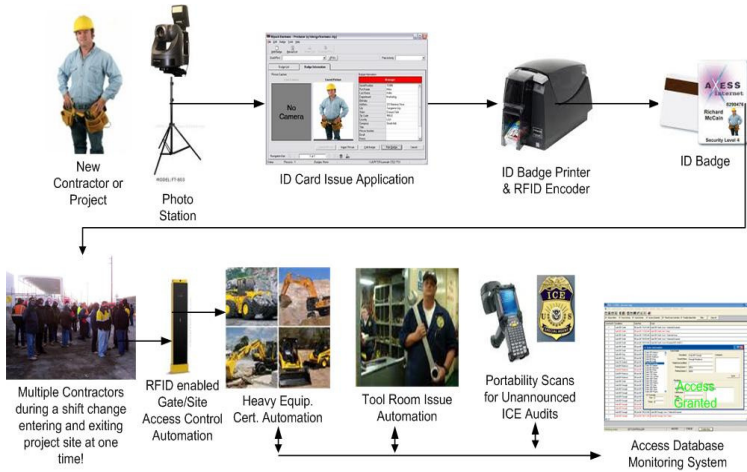
**FCB *id*** applications can provide various benefits as listed below:

- Automate accessibility
- Track zonal entrance and exit events
- Monitor and facilitate mass evacuation events
- Associate tagged assets and individuals

**FCB *id***  
Automatic *id*/Data Capture Solutions

## Job Site Access Data Management

**FCB id** understands the site access data flow requirements for a normal job site and or secure facility and as such has designed its Job Site Access Control application to provide that level of detail visibility facilitating granular level event reporting. In addition to our application performance, our systems leverage off the shelf components to ensure post service capability and solution stability.



**Our systems automate credentialing, secure tracking and provide real-time visibility via zonal and or campus wide facilities.**

## Making Applications a Reality

**FCB id** helps companies determine how best to apply certain technologies throughout the enterprise. We achieve this by providing project scoping, business process consulting, system design documentation, and hardware/software integration support.

### **FCB id** Services:

- High-Level Business Process Consulting
- Procurement of appropriate combination of hardware, software & services from tested and certified manufacturing partners
- On-site solution analysis & testing within your facility
- Complete solution design & AIDC tag placement services
- Turn-key integration and site commissioning services
- Post deployment and SLA maintenance support.

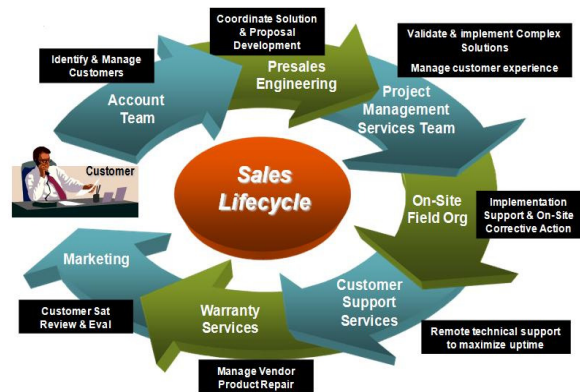
## Accelerate ROI with Proven Solutions

Together, **FCB id** and its strategic middleware vendors provide solutions with unique value:

- Proven business uses cases enabling businesses to deploy solutions in less time, with less cost and with less risk
- Comprehensive support for the entire RFID process from tagging to data capture to analysis
- High level design environment that allows users to create, adapt, and maintain processes to meet their business' specific needs
- Flexible architecture enabling organizations to run applications directly on readers and controllers reducing the cost or the required IT infrastructure and the total cost of ownership.

## Proven People, Proven Experience

Our team is an experienced group of data collection professionals that understand the science of applying RFID technology to business processes. We start each project by understanding of your specific environment and requirements. After achieving the baseline, next step is to collaborate with your team to develop a set of mutually agreed upon objectives and milestones specific to the project. Working with the on-site team to ensure a functional partnership that imparts knowledge and complete usability of application.



**FCB id**  
Automatic id/Data Capture Solutions

[www.fcbackground.com](http://www.fcbackground.com)

12750 Merit Drive Suite #1215  
Dallas, Texas 75251

Office 800.388.8827  
Fax 972.404.4415